

CERTIFIED LAND CORNER RECORDATION

DESCRIPTION OF CORNER EVIDENCE FOUND, AND ORIGINAL RECORD (If known)

LOCATION

Found 4" x 9" Limestone with "¼" chiseled on north face.
Chiseled "X" on top of stone.

¼ S.31
S. 6

G.L.O. record - Limestone, 16" x 12" x 5" - John B. Thomas,
Deputy Surveyor, 2 May 1871.

T.14N.,R.64W.
T.13N.,R.64W.
6th P.M.

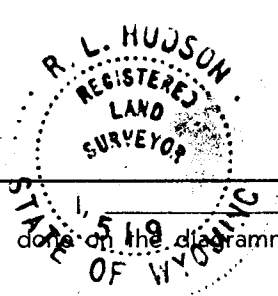
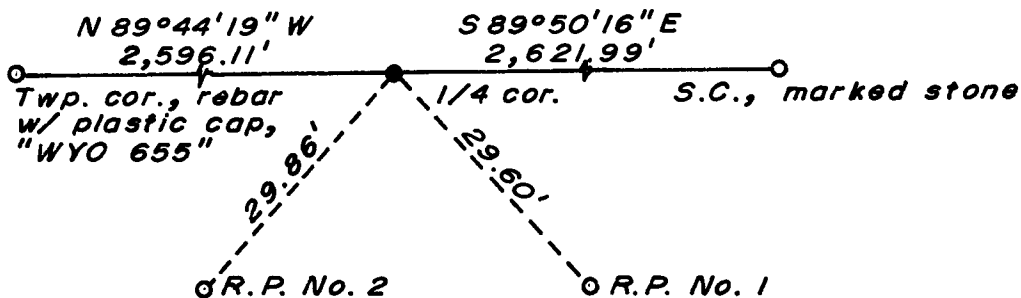
DESCRIPTION OF MONUMENT AND ACCESSORIES ESTABLISHED
TO PERPETUATE THE ORIGINAL LOCATION OF THIS CORNER:

At the corner: Not remonumented.

Accessories: A 5/8" dia. x 24" long rebar with 1½" dia. aluminum cap bears
S 42°37'30" E, 29.60 feet distant. (Stamped R.P. NO. 1)
A 5/8" dia. x 24" long rebar with 1½" dia. aluminum cap bears
S 41°47'30" W, 29.86 feet distant. (Stamped R.P. NO. 2)

SKETCH, WITH COURSE AND DISTANCE TO ADJACENT CORNER IF DETERMINED IN THIS SURVEY.
(May Sketch or Paste Reproduction on Reverse Side.)

Basis of Bearing - By solar observation, ½ mile east of this corner.
Distances based on measurements by electronic means.



I, R. L. Hudson certify that I have carefully performed ~~or reviewed~~ the work done on the diagrammed corner as reported on this recordation form and approve the same.

R. L. Hudson Wyoming L.S. No. 519
Signature of Surveyor Registration No.

STATE OF WYOMING,
Office of Clerk and Recorder,
County of _____

534721

This "corner record" was filed for record on the 6 day of July, 1977, was noted on the cross-index plat and is assigned page No. _____, in book No. _____.

Janet C Whitehead
County Official

Cross Index No. _____	T. _____	R. _____	Mer. _____
<u>43</u>	T. <u>13</u>	R. <u>64</u>	Mer. _____
<u>23</u>	T. <u>14</u>	R. <u>64</u>	Mer. _____
_____	T. _____	R. _____	Mer. _____
_____	T. _____	R. _____	Mer. _____
_____	T. _____	R. _____	Mer. _____
_____	T. _____	R. _____	Mer. _____